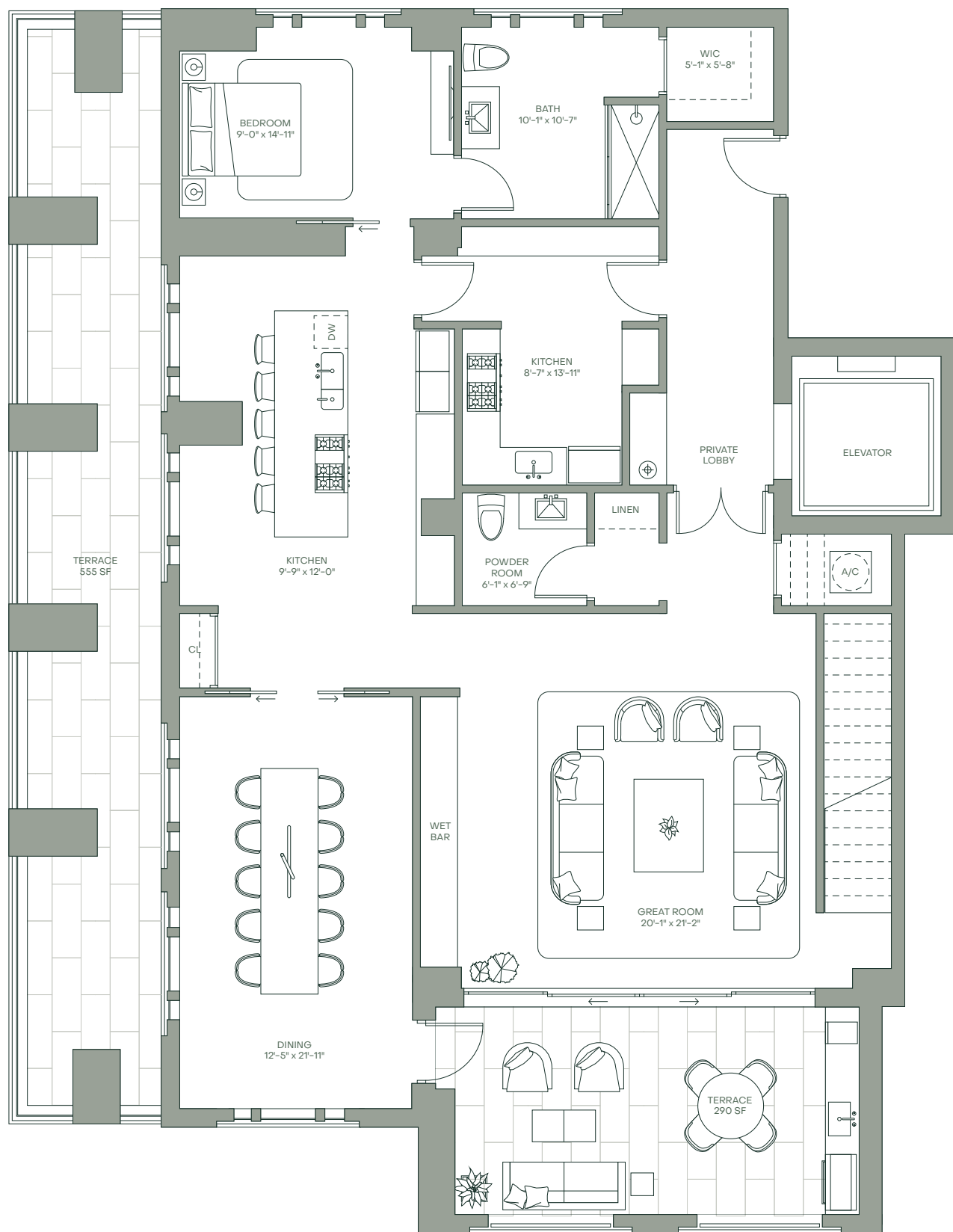
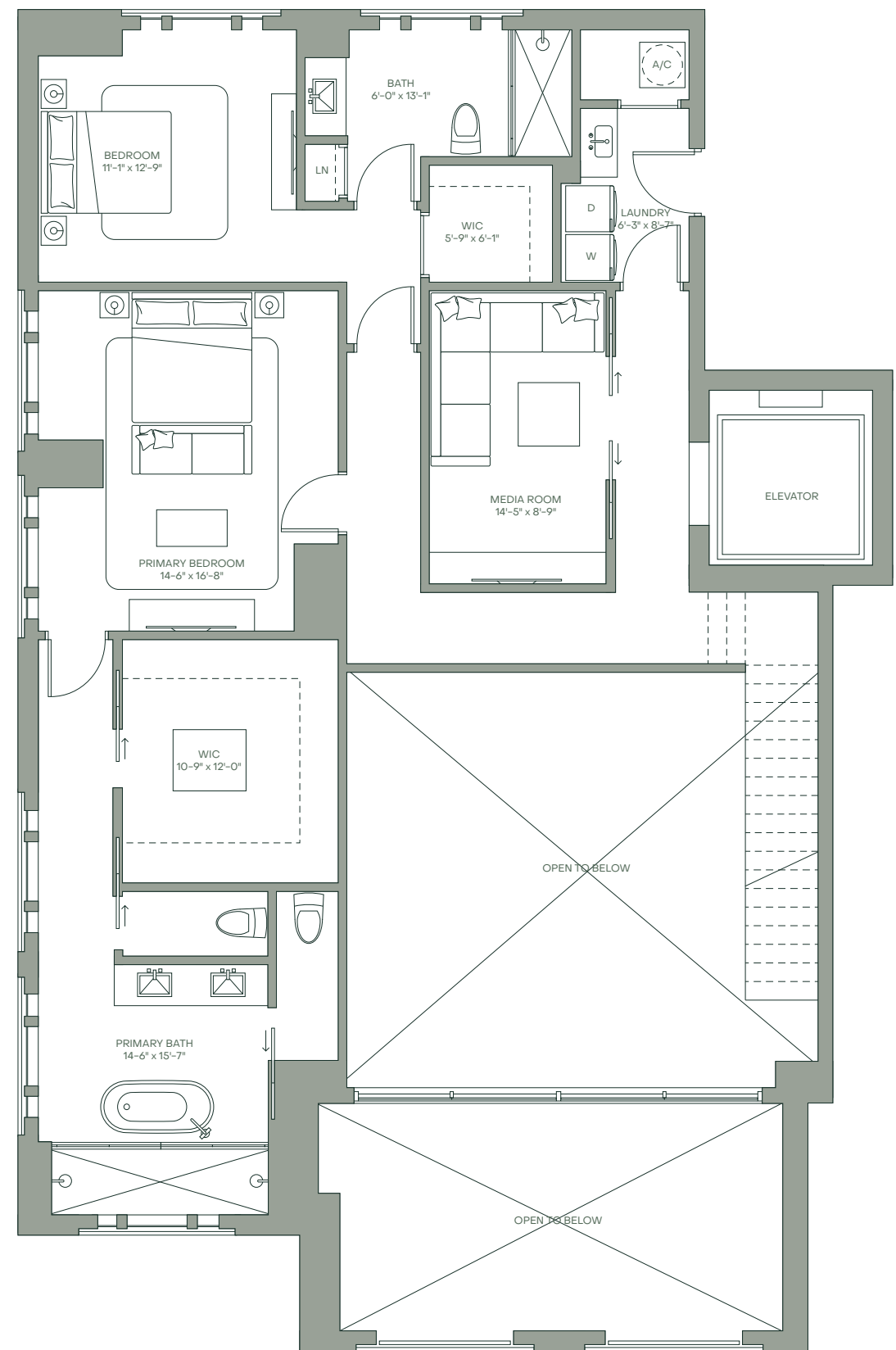


PONCE PARK

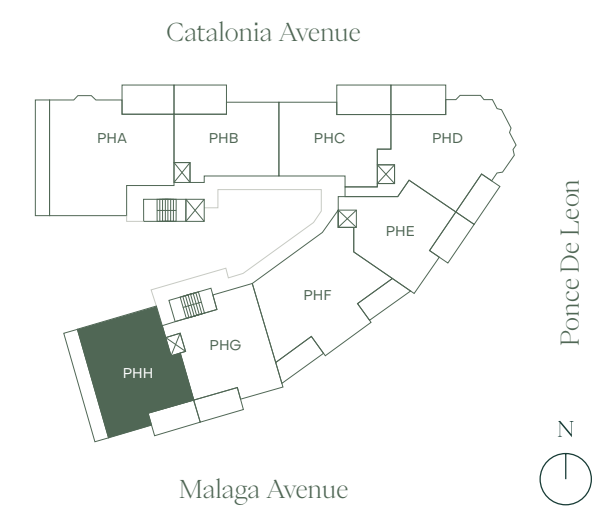
CORAL GABLES



LEVEL 01



LEVEL 02



PENTHOUSE COLLECTION

LEVEL 9
PH-H

3 BEDROOMS
3 BATHROOMS + POWDER ROOM

INTERIOR	3,593 SF	334 SQM
EXTERIOR	845 SF	78 SQM
TOTAL	4,438 SF	412 SQM



ORAL REPRESENTATIONS CANNOT BE RELIED UPON AS CORRECTLY STATING THE REPRESENTATIONS OF THE DEVELOPER. FOR CORRECT REPRESENTATIONS, MAKE REFERENCE TO THIS BROCHURE AND TO THE DOCUMENTS REQUIRED BY SECTION 718.503, FLORIDA STATUTES, TO BE FURNISHED BY A DEVELOPER TO A BUYER OR LESSEE. There are various recognized methods for calculating the square footage of a unit. The square footage and dimensions stated here is measured to the exterior boundaries of the exterior walls and the centerline of interior demising walls. This method of measurement varies from, and is larger than, the dimensions that would be determined by using the description and definition of the "Unit" set forth in the Declaration (which generally only includes the interior airspace between the perimeter walls and excludes interior structural components). For your reference, the area of the Unit, determined in accordance with those defined unit boundaries, is set forth in the Declaration. Note that measurements of rooms set forth on this floor plan are generally taken at the greatest points of each given room (as if the room were a perfect rectangle), without regard for any cutouts. Accordingly, the area of the actual room will typically be smaller than the product obtained by multiplying the stated length times width. The dimensions and square footage stated for this unit floor plan are approximate and may vary with actual construction and all floor plans are subject to change. All depictions of furnishings, appliances, built-ins, counters, soffits, floor coverings, lighting and other matters of detail, including, without limitation, items of finish and decoration, are conceptual only and are not necessarily included in each Unit. Consult the Developer's prospectus for information on what is offered with the Unit.